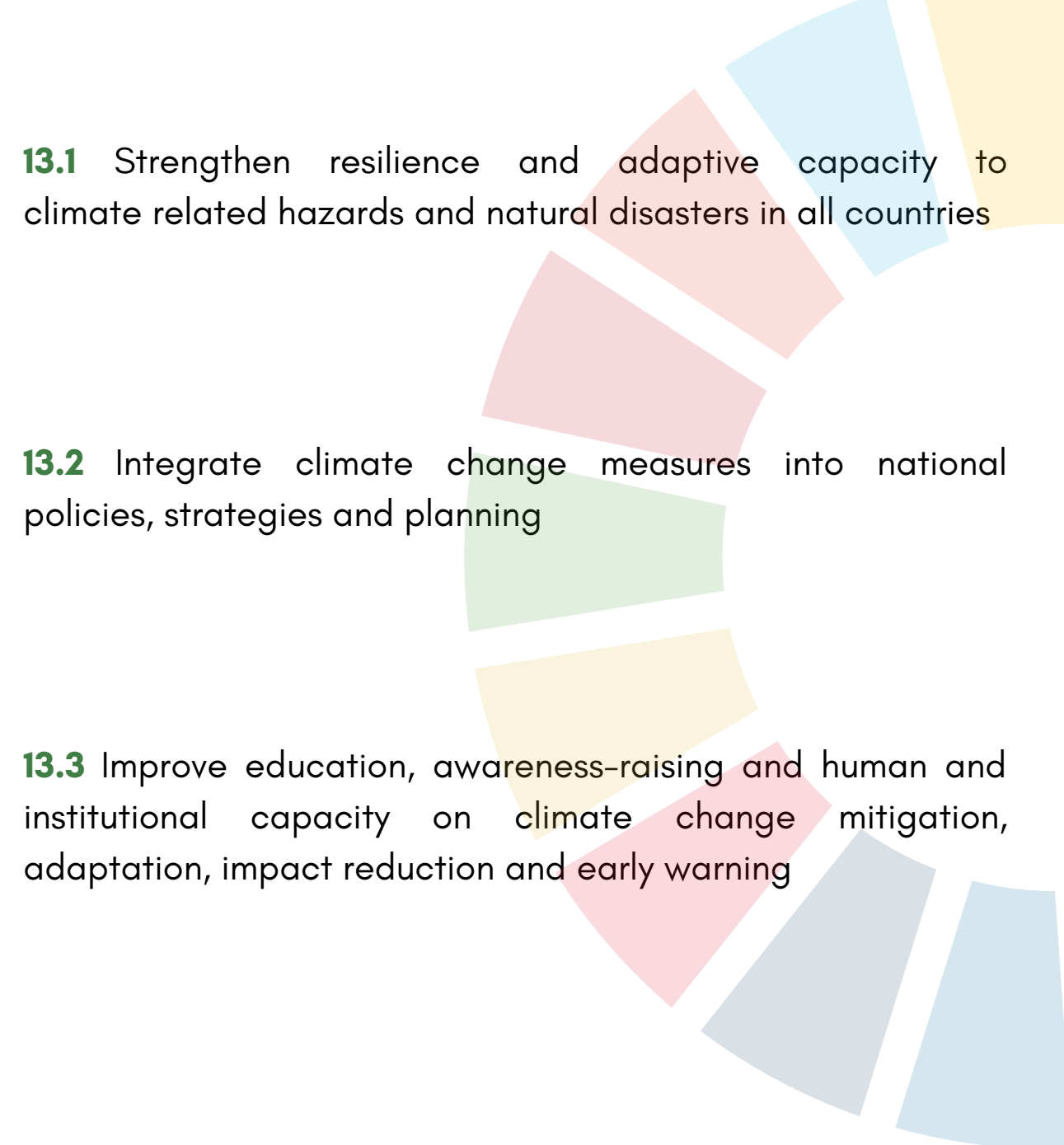




SDG 13 : TAKE URGENT ACTION TO COMBAT CLIMATE CHANGE AND ITS IMPACTS

KEY ISSUES AND OBJECTIVES TO WHICH LEGRAND CONTRIBUTES



13.1 Strengthen resilience and adaptive capacity to climate related hazards and natural disasters in all countries

13.2 Integrate climate change measures into national policies, strategies and planning

13.3 Improve education, awareness-raising and human and institutional capacity on climate change mitigation, adaptation, impact reduction and early warning

Legrand is committed to achieving **carbon neutrality by 2050** in line with the 1.5°C target of the Paris Agreement, and to reducing its Scope 1 and 2 emissions by 50% and its Scope 3 emissions by 15% by 2030. These commitments were validated by the Science Based Targets initiative in 2021. **Legrand encourages its key suppliers in this approach and invites them to set a formal target to reduce by 30% their CO2 emissions by 2030.** Sustainable purchasing and the use of recycled materials are improvement areas that are among Legrand's priority commitments. Legrand has also set an internal carbon price to evaluate its investments, to accentuate its eco-design approach and to improve its logistics processes by - for example - reducing transport distances, optimizing truck loading or limiting the use of air freight.

In order to raise awareness and involve its employees in actions that limit its impact on the environment, Legrand has organized two **eco-gestures campaigns** in 2021 and 2022 for all employees. Simple reporting on simple gestures has enabled more than a hundred employees to get involved and become eco-employees or eco-ambassadors. These campaigns are supported by **training modules and dedicated days**. In different regions of the world, local initiatives are launched, such as in the United Arab Emirates, where employees get together every year to clean up a nearby site, or in countries where employees plant trees.

Energy efficiency principles are implemented during construction, refurbishment and maintenance projects at the Group's sites.

Energy efficiency

Environmental investments

GHG emissions

Risks and opportunities related to climate change

